



PROPOSED STRUCTURE

**Willoughby City Council
22 June 2015**

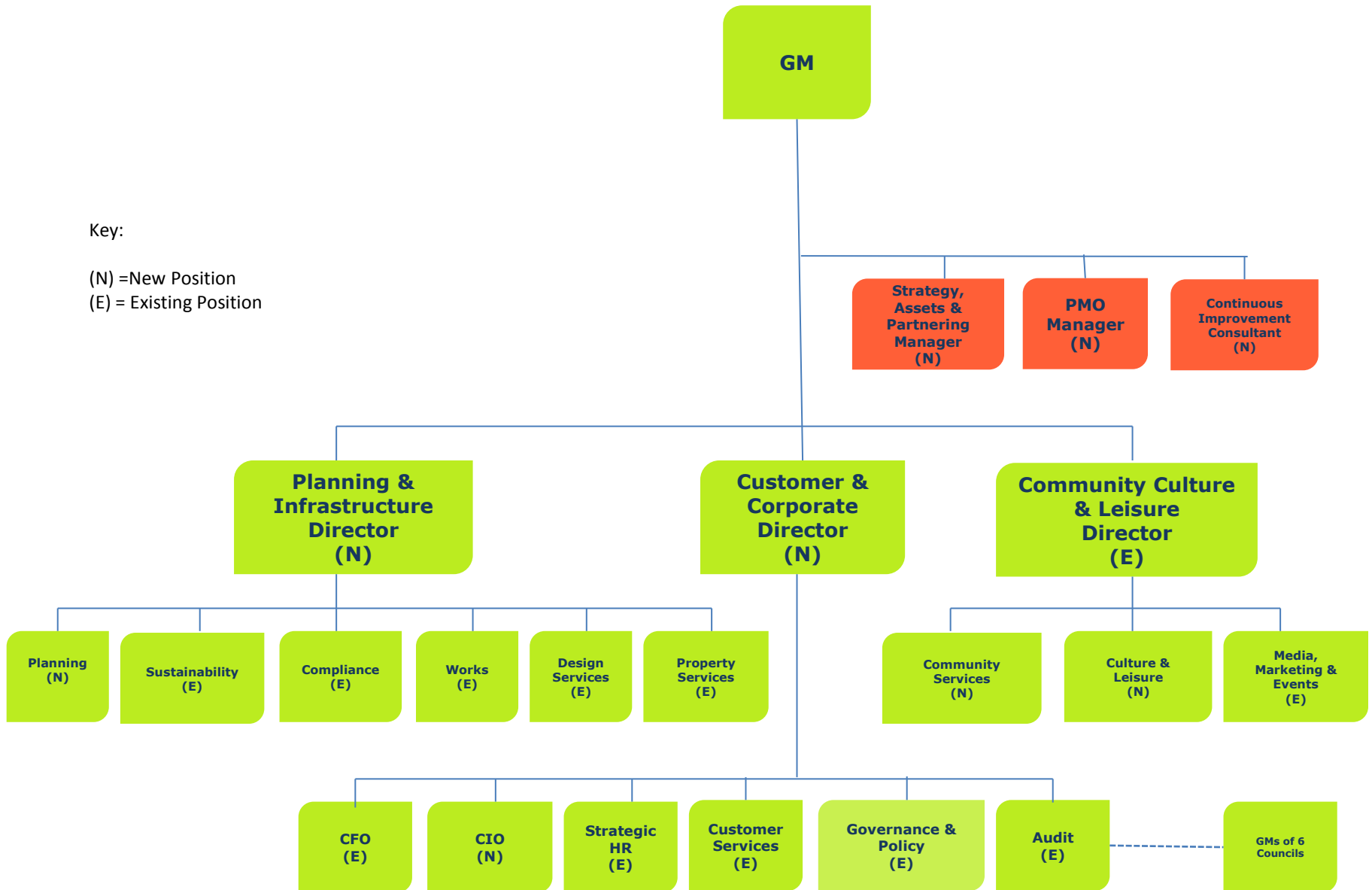


PROPOSED STRUCTURE

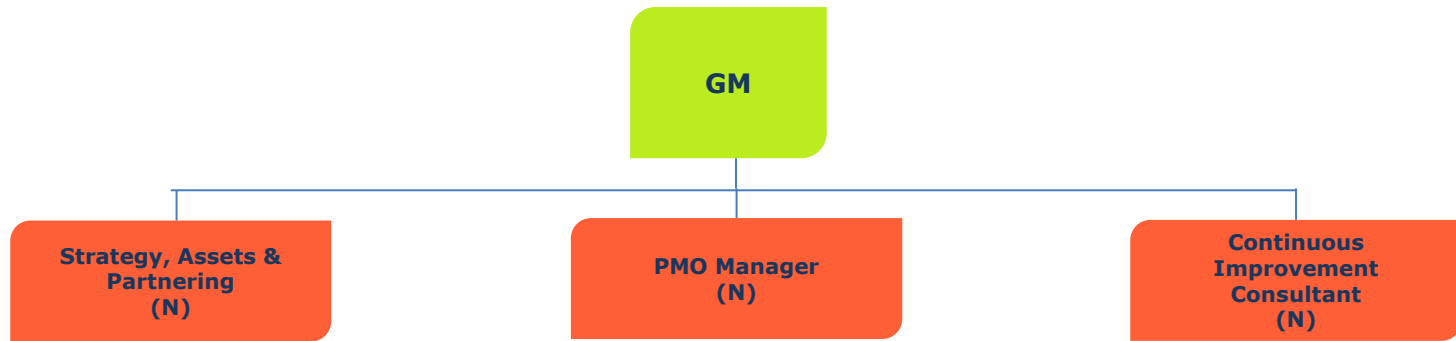
Key:

(N) = New Position

(E) = Existing Position



PROPOSED STRUCTURE – OFFICE OF THE GENERAL MANAGER



- **Assist Council to determine regional and city strategies, optimise the benefits of assets and to partner with Government and stakeholders to meet community priorities.**

- Drive strategic regional and city planning
- Integrate community aspirations with strategies and plans
- Establish and review asset management policies, systems and plans
- Government or private enterprise partnering strategy and coordination of strategic relationships
- Identification and realisation of additional resources through grants, bequests, sponsorship and partnering

- **Provide the tools and leadership that will ensure the organisation delivers its delivery program and major projects that will significantly improve outcomes for the community.**

- Project management centre of excellence
- Frameworks, standards and tools for capital, operational and improvement projects
- Employee coaching and training for project management
- Project requests, prioritisation, data and reporting driven centrally
- Repository of projects underway

- **Provide the tools and leadership that will ensure the organisation becomes efficient and provides value for money outcomes for the community.**

- Continuous improvement centre of excellence
- Generate cost reduction opportunities and implement process improvements
- Employee coaching and training for Continuous improvement
- Driving the implementation of new/updated business processes
- Facilitate cross organisational business improvement teams
- Continuous Improvement data and reporting

PROPOSED STRUCTURE - COMMUNITY CULTURE AND LEISURE



- **Provide City Wide Services that promote social connection and self reliance through services and programs that meet community needs.**

- Children's Services
- Youth Services
- Aged Care
- Volunteer Management

Venue programming and management for:

- Dougherty Community Centre
- 139 Artarmon Road Community Hall
- Willoughby Park Centre

- **Establish the City as a CBD and Regional cultural and leisure hub through services and programs that provide opportunities for recreation, sports, leisure, arts and culture.**

- Libraries
- Recreation and Leisure
- Arts and Cultural Services
- Arts & Cultural Services
- Multicultural Services

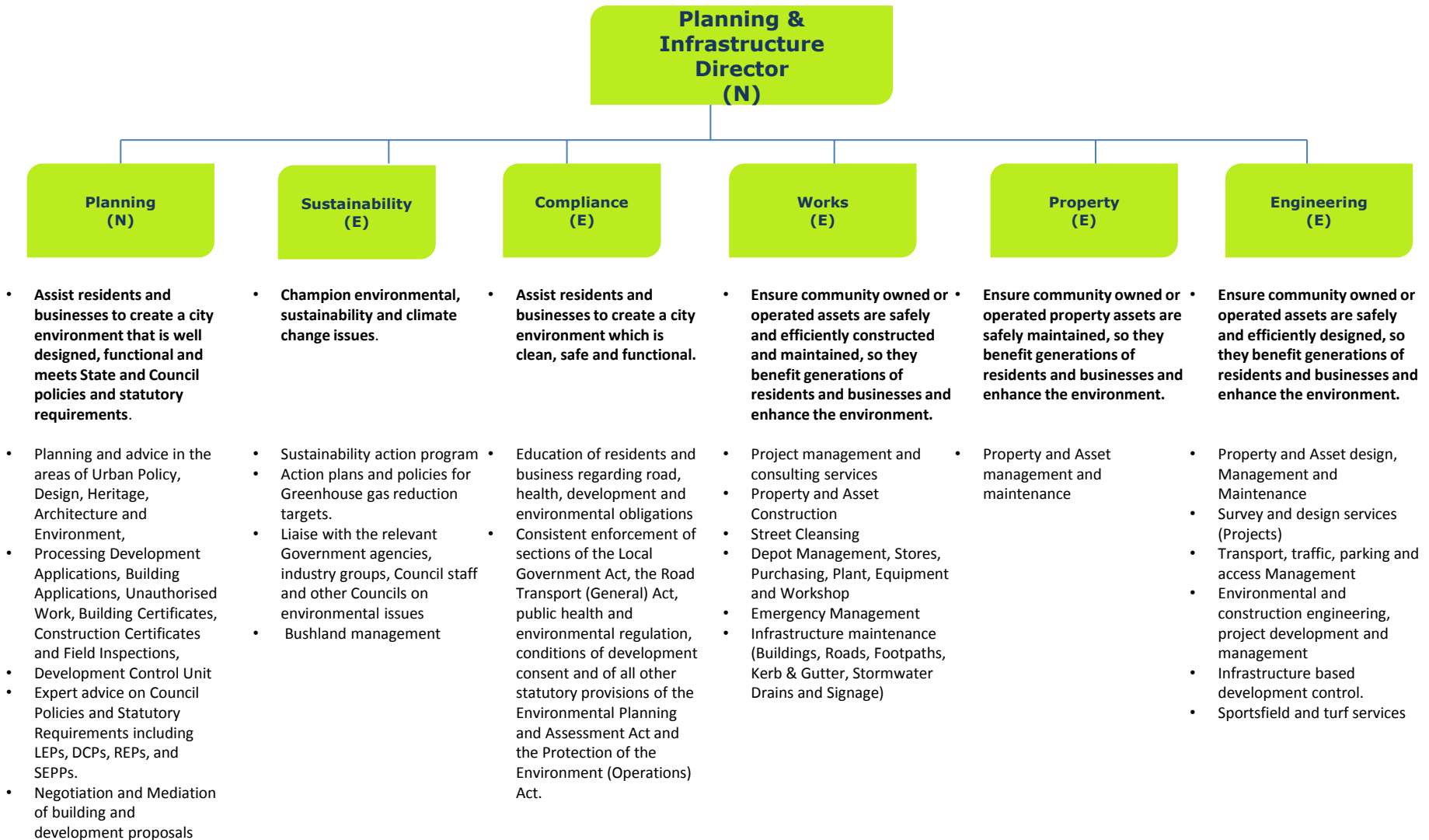
Venue programming and management for:

- Chatswood Concourse library.
- Northbridge, Naremburn, West Chatswood, Castlecrag and Artarmon branch libraries
- Willoughby Symphony Orchestra and Choir (WSOC)
- Zenith Theatre & Joe Ciantar Rehearsal Studio
- Willoughby Leisure Centre
- Willis Recreation & Sports Centre
- Northbridge Baths
- 4 x Unmanned Sporting Pavilions
- Gore Hill Sports Centre
- Sportsground and open space planning and bookings

- **Promote the activities and achievements of the city to residents, businesses and the region, to create a greater sense of pride and social connection.**

- Internal and external communications and policies
- Website and Intranet content
- Corporate brand and style
- Coordination of advertising
- Events

PROPOSED STRUCTURE - PLANNING AND INFRASTRUCTURE





PROPOSED STRUCTURE - CUSTOMER AND CORPORATE

