

# Venue Snapshot

## Dougherty Community Centre – Annexe Room



<b>Special Conditions:</b>	<ul style="list-style-type: none"> <li>• Minimum hire: Mon-Fri – 1 hour / Sat-Sun – 2 hours</li> <li>• No teenage or 21st birthday parties</li> <li>• Alcohol permitted with conditions</li> <li>• On-site café – Blend – Mon-Fri 8.30am-3.00pm</li> <li>• Hirers must follow the direction of DCC staff at all times</li> </ul>
<b>Room Dimensions:</b>	
<b>Room Capacity:</b>	<b>People</b>
Theatre Layout	50
Boardroom Layout	26
Classroom Tables Layout	24
U-Shape Tables Layout	24
Games	24
Active Class	20
<i>N.B Please see layout diagrams next page</i>	

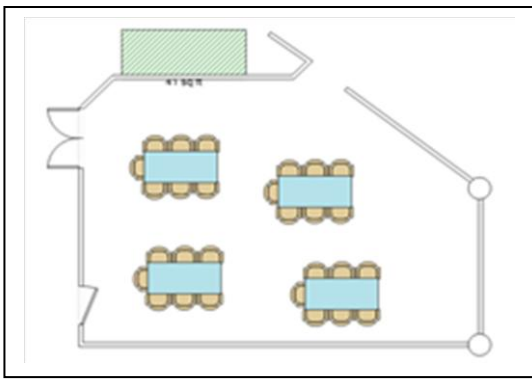
✓ = available at this venue    x = not available at this venue    \$ = available for hire at this venue (fees apply)

Amenities	Kitchen/Catering	Technology	Equipment/Furniture
x Disabled access	x Kitchen - Full	x Audio Visual system	✓ Tables - Full Trestle Size
x Outdoor area	✓ Kitchenette - sink & hot water	✓ Amplifier	x Tables - Children Size (0)
x Outdoor area - with playground equipment	x Tea/Coffee Crockery - Dry Hire	x Projector - Inbuilt	✓ Seating - Chairs - Adult size (50)
✓ Air conditioning	x Luncheon Crockery - Dry Hire	✓ Projector - Portable	x Seating - Chairs - Children Size (0)
✓ Heating	x Cutlery - Limited	✓ Projector screen	x Seating - Couch or arm chairs
✓ Ceiling Fans	x Water glasses	✓ Laptop	x Piano
x Electric Fans	\$ <b>On site Café</b>	✓ Whiteboard - Inbuilt	x Table Tennis Table
✓ Parking	\$ <b>On site Catering</b>	x Whiteboard - Electronic	x Pool Table
✓ Disabled parking	✓ Oven	x Whiteboard Portable	x Gym Equipment
✓ Toilet facilities (internal)	✓ Stove	x Wi-Fi	x Portable partitions
x Toilet facilities (external)	✓ Microwave	✓ Lectern	x Trolley - Upright
x Accessible toilet	x Dishwasher	x Projector trolley	✓ Bins
x Shower Facilities	✓ Fridge - Full size		
x Storage	x Fridge - Bar fridge size		<b>Flooring</b>
x Basketball/Futsal Courts	x Hot Water - Kettle		Flooring - Carpeted
x Stage	✓ Hot Water - Zip System		Flooring - Dance Floor
✓ Power points	x Hot Water - Electric Urn		✓ Flooring - Vinyl Floor
			Flooring - Polished Timber

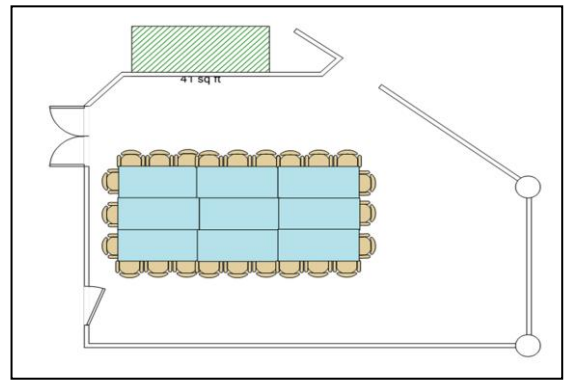


**Annexe Room Image**

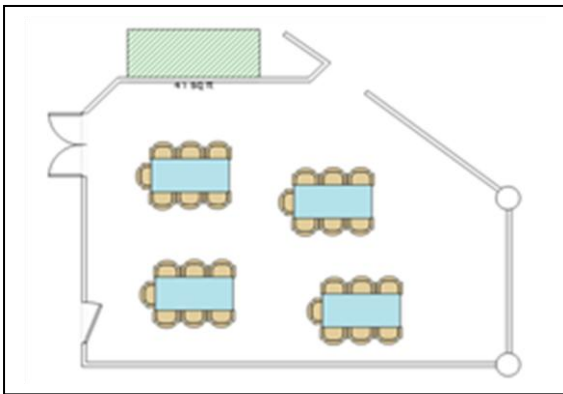
**Suggested Banquet Layout**



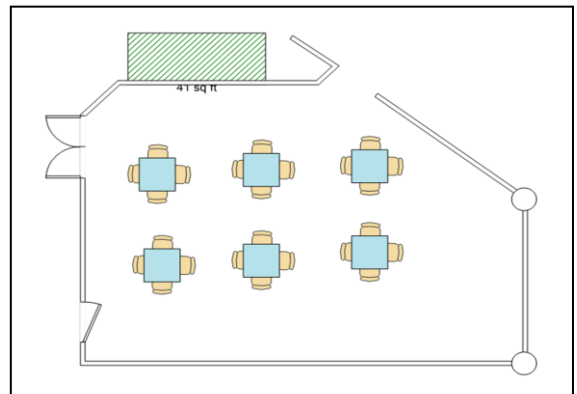
**Suggested Boardroom Layout**



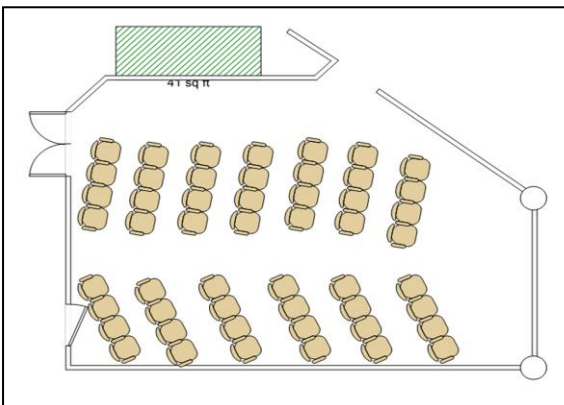
**Suggested Classroom Layout**



**Suggested Games Layout**



**Suggested Theatre Layout**



**Suggested U-Shape Layout**

