

Venue Snapshot

West Chatswood Community Room

Special Conditions:	✓ - Alcohol permitted with conditions
Room Dimensions:	10.4m x 6m
Room Capacity: Theatre Layout Classroom Layout Boardroom Layout Active Class Children's Birthday Party – Non Sports Standing/Cocktail N.B Please see layout diagrams next page	People 30 24 14 10 20 30

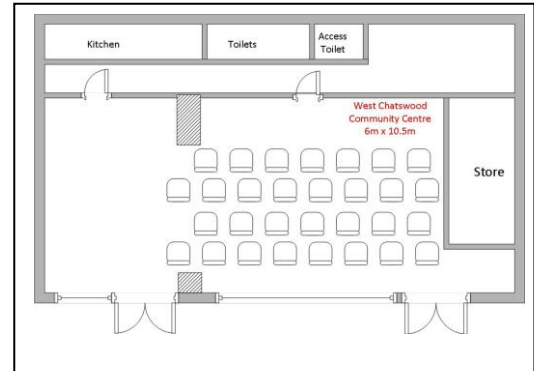
✓ = available at this venue x = not available at this venue
 \$ = available for hire at this venue (fees apply)

Amenities	Kitchen/Catering	Technology	Equipment/Furniture
✓ Disabled access	x Kitchen - Full	x Audio Visual system	✓ Tables - Full Trestle Size (4)
✓ Outdoor area	✓ Kitchenette - sink & hot water	x Amplifier	✓ Tables - Childrens Size (2)
✓ Outdoor area - with playground equipment	x Tea/Coffee Crockery - Dry Hire	x Projector - Inbuilt	✓ Seating - Chairs - Adult size (30)
✓ Air conditioning	x Luncheon Crockery - Dry Hire	x Projector - Portable	✓ Seating - Chairs - Childrens Size (12)
✓ Heating	x Cutlery - Limited	x Projector screen	x Seating - Couch or arm chairs
x Ceiling Fans	x Water glasses	x Computer/PC	x Piano
x Electric Fans	✓ On site Café	x Whiteboard - Inbuilt	x Table Tennis Table
✓ Parking	x On site Catering	x Whiteboard - Electronic	x Pool Table
✓ Disabled parking	x Oven	x Whiteboard Portable	x Gym Equipment
✓ Toilet facilities (internal)	x Stove	x WiFi	x Portable partitions
x Toilet facilities (external)	✓ Microwave	x Lectern	x Trolley - Upright
✓ Accessible toilet	Dishwasher	x Projector trolley	✓ Bins
x Shower Facilities	✓ Fridge - Full size		
x Storage	x Fridge - Bar fridge size		Flooring
x Basketball/Futsal Courts	✓ Hot Water - Kettle		Flooring - Carpeted
x Stage	x Hot Water - Zip System		Flooring - Dance Floor
✓ Powerpoints (8)	x Hot Water - Electric Urn		✓ Flooring - Vinyl Floor
			Flooring - Polished Timber

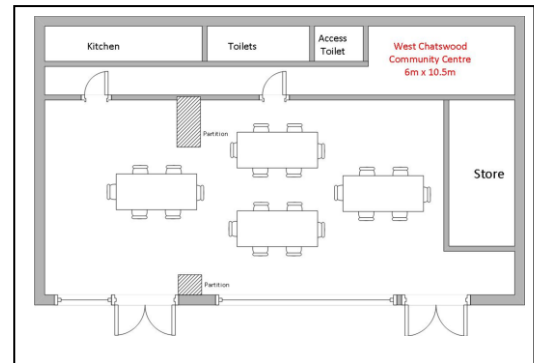
Venue Snapshot

West Chatswood Community Room

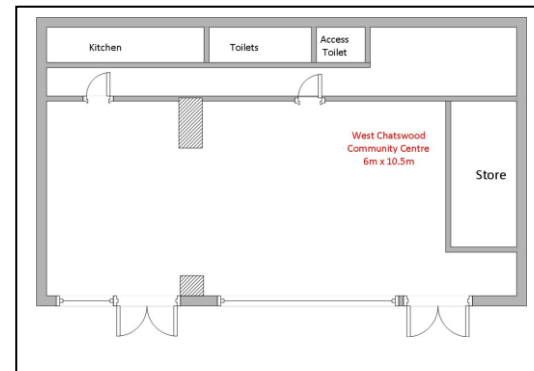
Theatre Layout



Classroom Layout



Standing/Active Layout



Boardroom Layout

